

**From:** Jim Scharl <jim@wisconsinlpr.com>

**Date:** June 4, 2021 at 12:49:10 PM CDT

**To:** John Zimdars <jzimdars@centurylink.net>, Mike Rasmussen <mike.inland@yahoo.com>, "Nordin, Brenda L - DNR" <Brenda.Nordin@wisconsin.gov>

**Subject:** Townsend Lakes - 2021 EWM control strategy

Good afternoon John, Mike, & Brenda,

Now that I had a bit of time in the office I was finally able to finalize the maps from our pre-treatment EWM survey to plan for potential EWM control for 2021.

We were out May 14 to complete the survey and did a meander survey in Horn and Explosion Lakes along with the entirety of McCaslin Brooke. The goal was to verify the presence/absence of EWM from prior maps, gauge initial results of the fluridone impact through the Brook, and map existing EWM areas for potential control under the grant. Beds that were large enough to map, about 0.1 ac or bigger, were GPS'd around the perimeter. Individual plants or clumps of EWM that were spread out and not dense enough to call a true bed were recorded as individual points. The maps for all areas are included in the attached along with a table below.

Overall, things looked very good. with less than expected EWM in all locations. For **McCaslin Brook** there was a good bit of reduction from 2020's fluridone flow through. We mapped a handful of beds and an expected smattering of individual plants or clumped. In total, there were 4 beds large enough to map the perimeter. The largest being a 2.8 acre bed south, or downstream, of the bridge.

---

This bed was fairly dense and nearly topped out in slow areas next to the main channel. Another denser bed was found just downstream of the Red Cedar boat launch at 0.9 acres. There were two other dense pockets of EWM mapped, but both were quite small (0.11 and 0.25 acres) and are not included in the management plans for 2021.

The prior 2019 map in **Explosion Lake** showed a significant amount more EWM than mapped. While we did find a bed in the entrance from Reservoir Pond (which was expected), the narrow channel on the west contained very little EWM, only enough to map individual plants. There was a good amount of native, northern water-milfoil present. This was likely mis-identified in 2019 and mapped as EWM.

**Horn Lake** had about what we expected for EWM. The target area along the east/north shore was nearly as expected. We did find another bed just out from the culvert entrance from Reservoir Pond. Besides these two areas, there was little EWM noted.

The next steps are to submit the permit, which I'll be doing today, then planning the treatment and pre-treatment sub-PI survey within the target areas. I expect to do both the pre-treatment sub-PI and the treatment on the same day. All areas will be targeted with ProcellaCOR and I'm still finalizing the rates and residual sampling spots as well.

If any questions come up, please let me know and I'll be happy to assist.

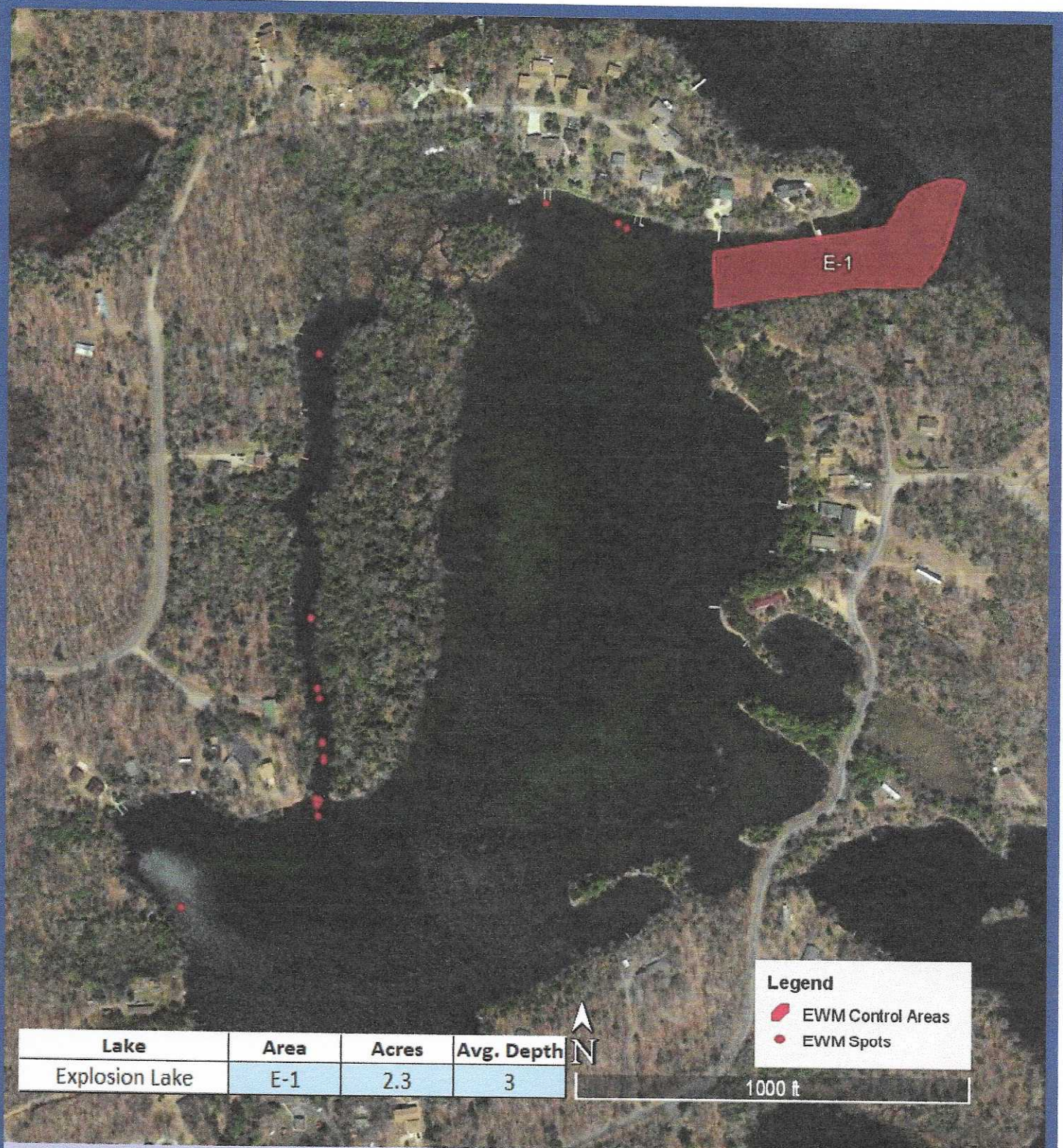
Take care,

Jim

Lake	Area	Acres	Avg. Depth
Horn Lake	HL-1	1.1	6
	HL-2	1.7	7
Explosion Lake	E-1	2.3	3
McCaslin Brook	Mc-1	0.9	2
	Mc-2	2.8	2.5
	Mc-3	0.25	4
	Mc-4	0.11	2
TOTAL	---	9.16	---
TREATMENT TOTAL*	---	8.8	---

\* - treatment total excludes area Mc-3 & Mc-4





Lake	Area	Acres	Avg. Depth
Explosion Lake	E-1	2.3	3

**Legend**

- EWM Control Areas
- EWM Spots

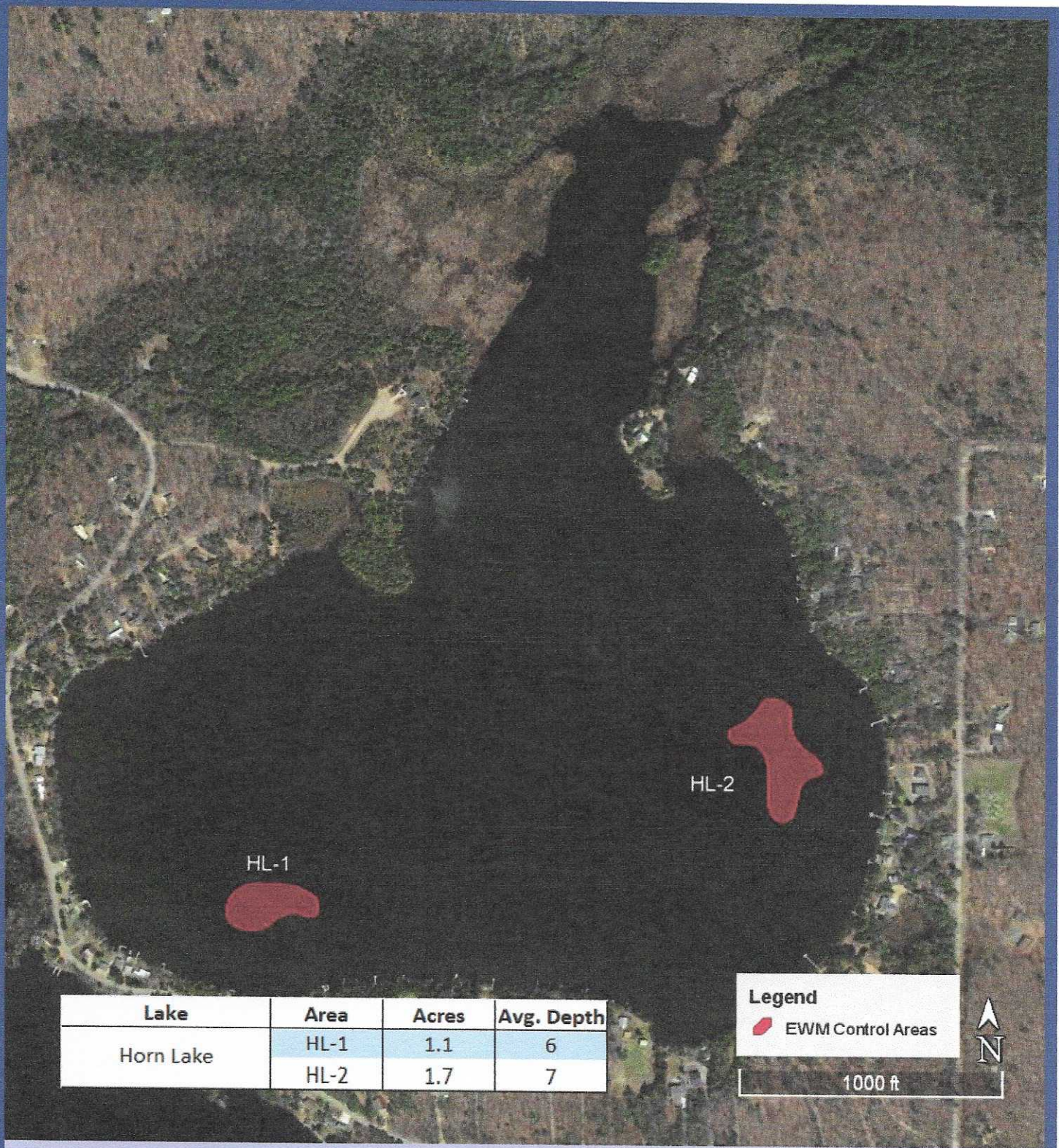
## 2021 EWM Locations


**Wisconsin Lake & Pond Resource LLC**  
 "Providing Professional Resources for Management of Your Lake or Pond"  
[www.WisconsinLPR.com](http://www.WisconsinLPR.com) (920) 872-2032

Explosion Lake  
 Oconto County  
 Surveyed: May 14, 2021

①





Lake	Area	Acres	Avg. Depth
Horn Lake	HL-1	1.1	6
	HL-2	1.7	7

**Legend**  
 EWM Control Areas

1000 ft



## 2021 EWM Locations

**Wisconsin**  
**Lake & Pond Resource LLC**  
 "Providing Professional Resources for Management of Your Lake or Pond"  
[www.WisconsinLPR.com](http://www.WisconsinLPR.com) (920) 872-2032

Horn Lake  
 Oconto County  
 Surveyed: May 14, 2021



Lake	Area	Acres	Avg. Depth
McCaslin Brook	Mc-1	0.9	2
	Mc-2	2.8	2.5
	Mc-3	0.25	4
	Mc-4	0.11	2



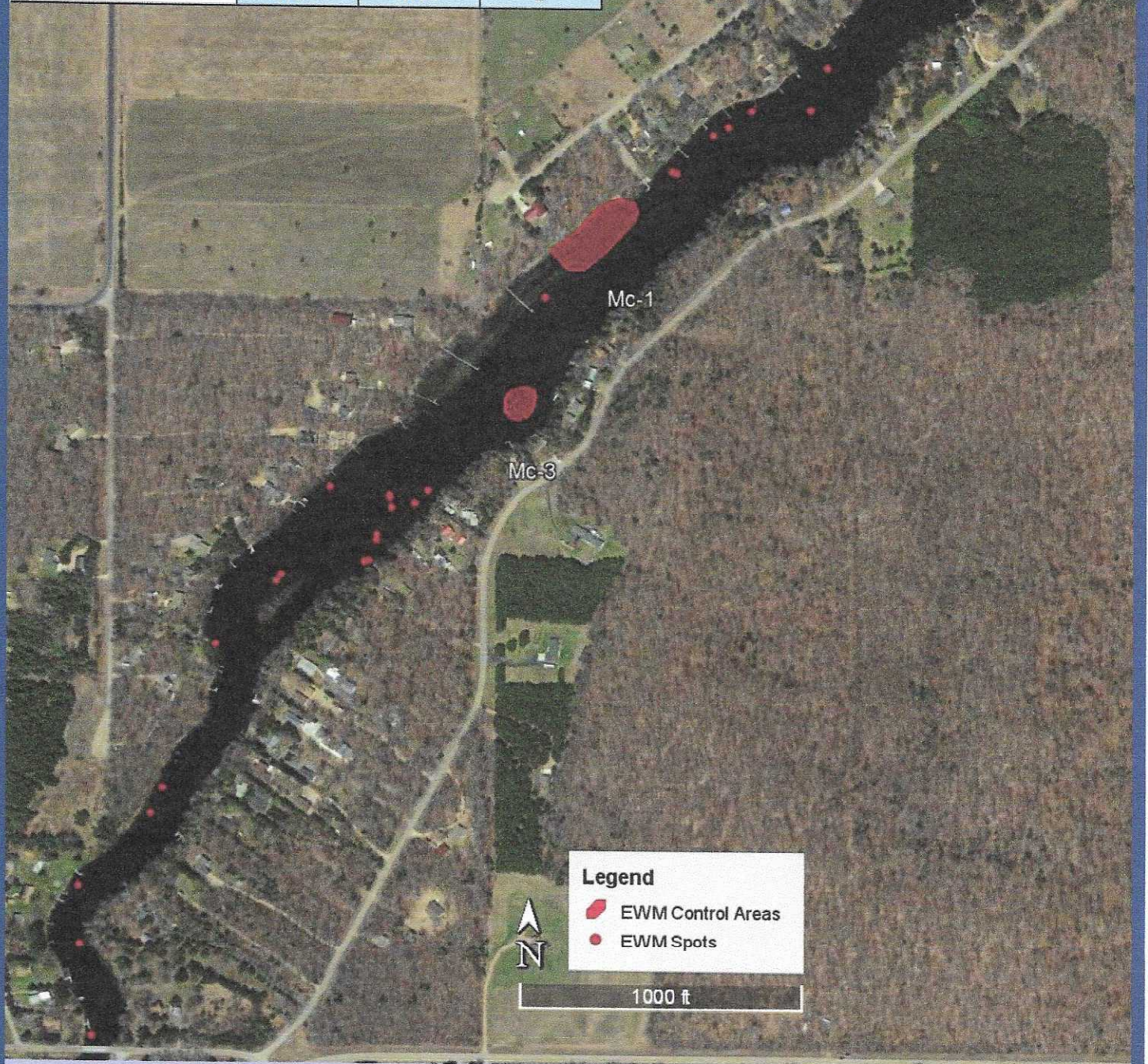
## 2021 EWM Locations

**Wisconsin**  
**Lake & Pond Resource LLC**  
 "Providing Professional Resources for Management of Your Lake or Pond"  
[www.WisconsinLPR.com](http://www.WisconsinLPR.com) (920) 872-2032

McCaslin Brook - Entire  
 Oconto County  
 Surveyed: May 14, 2021



Lake	Area	Acres	Avg. Depth
McCaslin Brook	Mc-1	0.9	2
	Mc-2	2.8	2.5
	Mc-3	0.25	4
	Mc-4	0.11	2



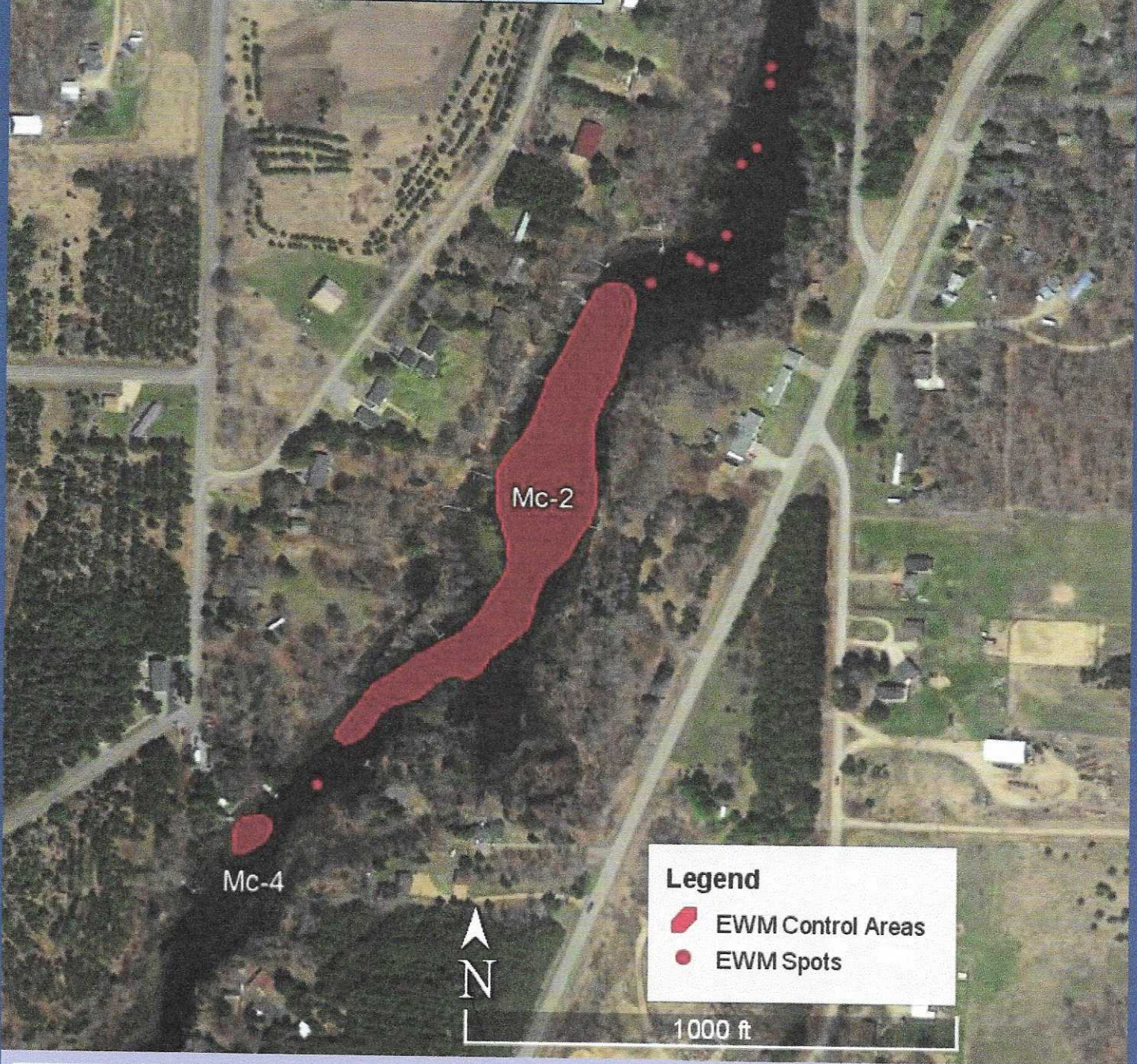
## 2021 EWM Locations


**Wisconsin**  
**Lake & Pond Resource LLC**  
 "Providing Professional Resources for Management of Your Lake or Pond"  
[www.WisconsinLPR.com](http://www.WisconsinLPR.com) (920) 872-2032

McCaslin Brook - North  
 Oconto County  
 Surveyed: May 14, 2021



Lake	Area	Acres	Avg. Depth
McCaslin Brook	Mc-1	0.9	2
	Mc-2	2.8	2.5
	Mc-3	0.25	4
	Mc-4	0.11	2



**Legend**

- EWM Control Areas
- EWM Spots

## 2021 EWM Locations

**Wisconsin**  
**Lake & Pond Resource LLC**  
 "Providing Professional Resources for Management of Your Lake or Pond"  
[www.WisconsinLPR.com](http://www.WisconsinLPR.com) (920) 872-2032

McCaslin Brook - North  
 Oconto County  
 Surveyed: May 14, 2021